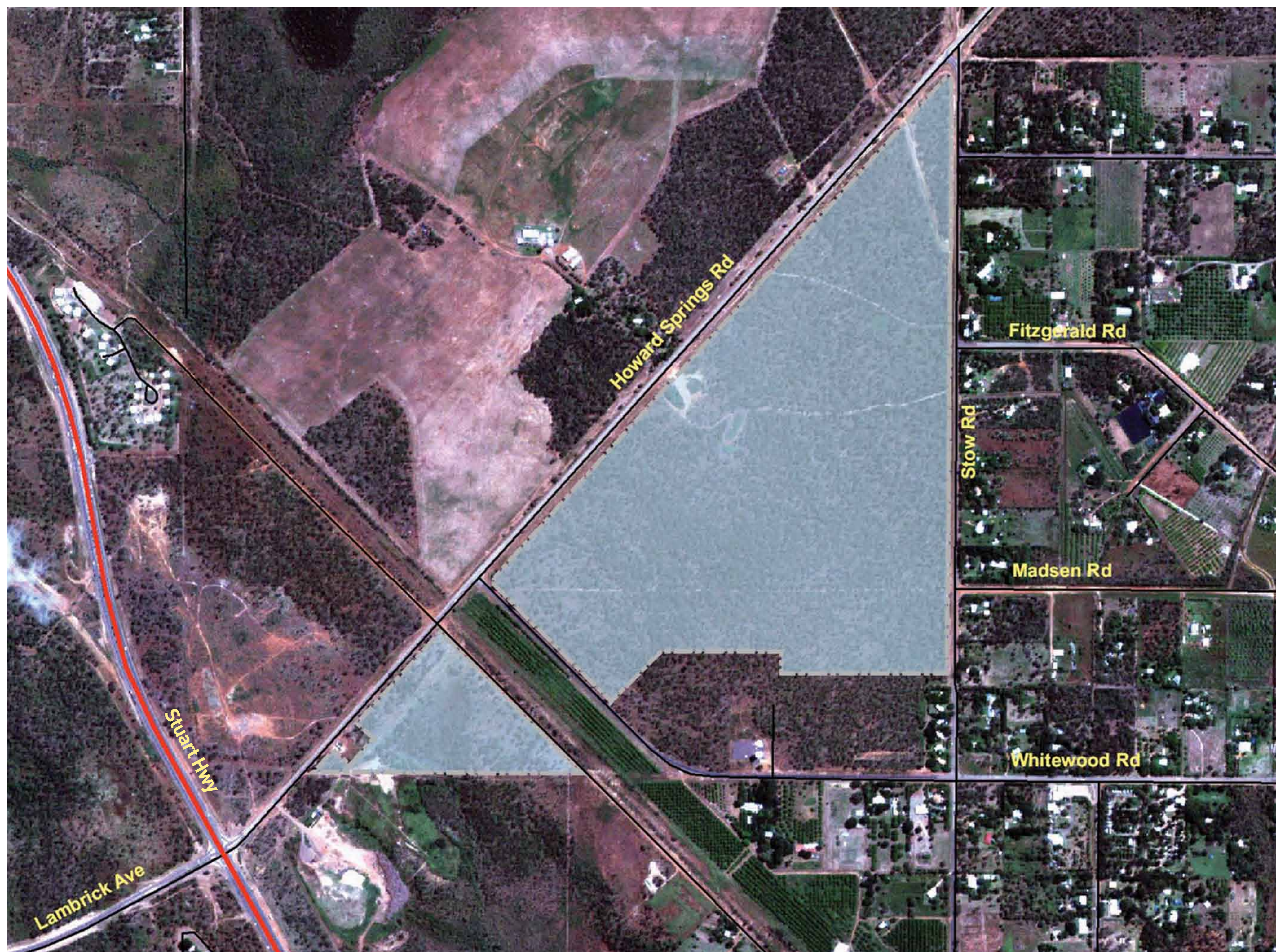


Howard Springs Accommodation Village



Summary

- The Accommodation Village will house the fly-in fly-out workforce required to build the Ichthys gas processing facilities at Blaydin Point.
- The Village has been designed to minimise potential impact on the surrounding community and takes into account community feedback.
- The community will have an opportunity to comment on the Exceptional Development Permit (EDP) application, including advanced designs during a 4 week public comment period.
- Construction of the Village is expected to commence from Q2 2012 and take approximately 2 years to complete.
- Future use of the site once the Village is no longer required for the construction workforce has yet to be determined by the NT Government.