



INPEX CORPORATION

Public Relations Group, Corporate Communications Unit
Akasaka Biz Tower, 5-3-1 Akasaka, Minato-ku, Tokyo 107-6332 JAPAN

10 January 2012

**INPEX signs Liquefied Natural Gas (LNG) sales agreement with
CPC, Chubu Electric and Toho Gas, Ichthys LNG Project, Australia**

INPEX CORPORATION (INPEX) and TOTAL today finalised the sale of the total volume of LNG from the Ichthys LNG Project with the signing of legally binding Sales and Purchase Agreements (SPA) with CPC Corporation, Taiwan (CPC), Chubu Electric Power Company, Inc. (Chubu Electric) and Toho Gas Co., Ltd. (Toho Gas).

Under the SPAs, Ichthys LNG Pty Ltd, a company jointly owned by INPEX and TOTAL and the seller of Ichthys LNG, will sell 2.52 million tonnes per annum (mtpa) of LNG for 15 years commencing in 2017 from the Ichthys LNG Project to:

- CPC - 1.75 mtpa
- Chubu Electric - 0.49 mtpa
- Toho Gas - 0.28 mtpa

This follows the announcement of 6 December 2011 of LNG sales and purchase agreements totaling 4.0 mtpa with a consortium of five major Japanese utility companies composed of Tokyo Electric Power Company, Inc, Tokyo Gas Co., Ltd., The Kansai Electric Power Co., Inc., Osaka Gas Co., Ltd. and Kyushu Electric Power Company Inc., and LNG offtake agreements for 1.8 mtpa were also agreed by INPEX and a TOTAL affiliate.

The Ichthys LNG Project Joint Venture is seeking the continued support from the Australian Government, the Western Australian Government, the Northern Territory Government and other stakeholders for early and optimal commercial gas production from the Ichthys LNG Project.

About INPEX

INPEX CORPORATION is a worldwide oil and gas exploration and production company currently involved in more than 70 projects across 26 countries. INPEX is ranked in the top 100 global energy companies and is listed on the Tokyo Stock Exchange. INPEX has been a part of the Australian business community since 1986 and is involved in a number of projects in Australia and the Timor Sea, including the large-scale Ichthys Project, the Van Gogh, Kitan and Ravensworth projects, Bayu-Undan development and



INPEX CORPORATION

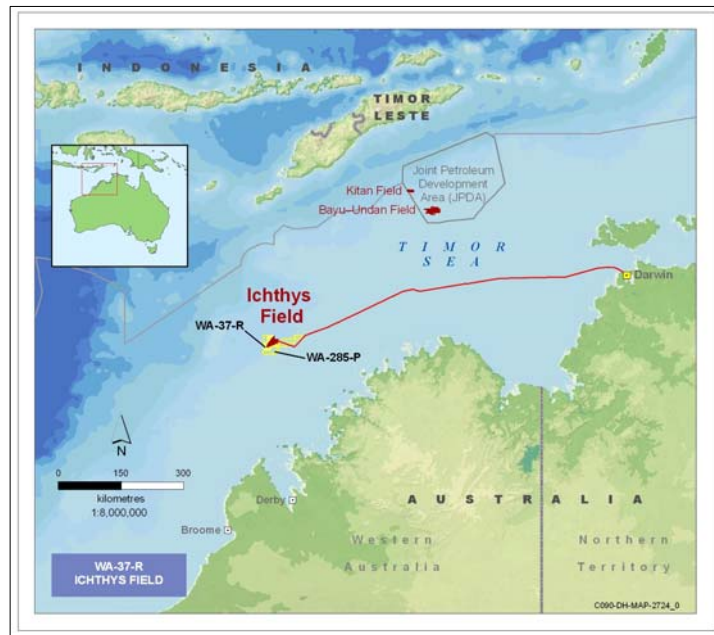
Public Relations Group, Corporate Communications Unit
Akasaka Biz Tower, 5-3-1 Akasaka, Minato-ku, Tokyo 107-6332 JAPAN

Darwin LNG.

About the Ichthys LNG Project

The Ichthys LNG Project is a Joint Venture between INPEX group of companies (the Operator) and Total group of companies. Gas from the Ichthys Field, in the Browse Basin offshore Western Australia, will undergo preliminary processing offshore to remove water and raw liquids, including some condensate. The gas will then be exported to the onshore liquefaction plant in Darwin via an 889km subsea pipeline. The Ichthys LNG Project is expected to produce 8.4 mtpa of LNG and 1.6 mtpa of LPG, along with approximately 100,000 barrels of condensate per day at peak.

Media Contact: INPEX Tokyo Office, Public Relations Group, Tel) +81-3-5572-0233



Ichthys Field Location



Ichthys LNG Plant, Darwin (image)