



# ***INPEX Australia***

## *Community Sponsorship Application Guidelines*



# ***INPEX is committed to contributing to the sustainability of the communities in which it operates through its community investment activities.***

## **Objectives**

Through our community investment activities INPEX's main objectives are to:

- support the delivery of meaningful social impact in the communities where INPEX has or expects to have a presence
- develop long-term, transparent and mutually beneficial community relationships
- strengthen community bonds and increase local capacity
- support the strengthening of INPEX's brand and reputation and engage and involve its workforce.

## **INPEX values**

Our values of Safety, Integrity, Diversity, Ingenuity and Collaboration define the INPEX culture, and guide our approach, our actions and our relationships with each other, our customers and the communities in which we work.

## **Focus areas**

Our community investment activities focus on initiatives that reflect our corporate values and support our business objectives.

We have developed a framework to describe the social impact we aim to contribute to through our community investment activities, and the key outcomes, groups and regions where we focus our support.

Aligning with this framework, INPEX will concentrate sponsorship funding for initiatives that benefit the following demographics:



### **Priority groups**

- Aboriginal and Torres Strait Islander peoples
- Young people
- Local businesses
- The broader community



### **Priority regions**

- Darwin
- the broader Northern Territory
- the Kimberley region, Western Australia
- regions of new business activities

## Priority themes (outcome areas)



### **Education, training, and skill development**

Individuals can advance and flourish in their chosen pathway, pursuing relevant careers



### **Health and wellbeing**

Individuals feel stronger, healthier, and more connected to culture and the broader community



### **Broader community**

Communities are resilient, sustainable and attractive places to live

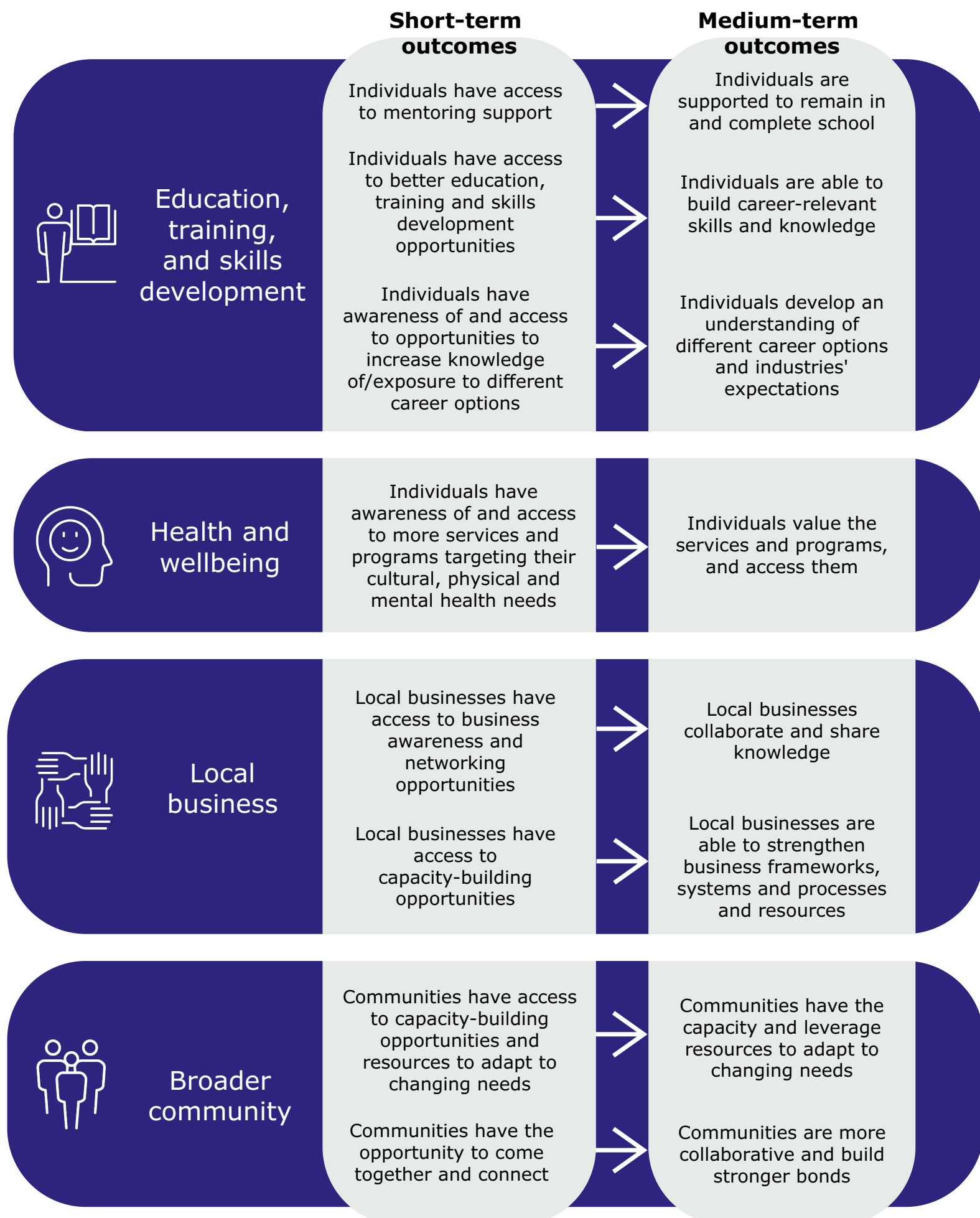


### **Local business**

Local businesses are better connected and equipped to conduct their business and take on new opportunities

***We aim to contribute to positive social impact in the communities where we have a presence by supporting initiatives across four priority outcome areas.***

*We wish to support initiatives (programs and events) that seek to achieve the following outcomes over the short to medium-term.*



## ***Assessment guidelines***

We consider several factors when assessing partnership proposals, including the following:

- the proposed initiative addresses an identified need (gap or opportunity) within the community
- the existence of similar initiatives (programs seeking like outcomes for the intended beneficiaries) in the community
- the strength of the initiative/proposal in aligning with:
  - our objectives and values areas for community investment (p. 2)
  - our focus areas (priority groups, locations) (p. 2)
  - our Community Investment outcomes (p. 3)
- the proposed initiative prioritises the use of local goods and service providers where possible
- the cost and breakdown of funding for the initiative in consideration of its expected impact
- other funding or in-kind support provided for the proposed initiative
- other community investment support that is available in the nominated community
- opportunities provided for our personnel and/or other stakeholders to engage with the initiative and/or your organisation
- the proposed initiative must be a short-term or one-off community program or event (completed within 12 months).

The applicant must also:

- have appropriate Health, Safety & Environment (HSE) guidelines and insurances in place
- be registered with the Australian Taxation Office, a recognised Deductible Gift Recipient and/or registered as a not-for-profit organisation
- review and comply with the INPEX Anti-Bribery and Anti-Corruption Standard when acting on behalf of, or when utilising funding from, INPEX
- be prepared to disclose information about any member of your organisation's management who is:
  - a current or former public official;
  - an employee of INPEX or a joint venture participant\*;
  - an employee of a contractor to INPEX or a joint venture participant; or
  - an immediate family member of the previous categories.

NB: The requested disclosures do not invalidate an application but help us to consider and manage actual, potential or perceived conflicts of interest in the assessment of the application.

\*A joint venture participant is an organisation that has an interest (share) in the same projects as INPEX Australia. Our joint venture participants can be found on the page linked above.



### ***Aboriginal and Torres Strait Islander engagement***

Where an initiative is being undertaken for the benefit of Aboriginal and/or Torres Strait Islander beneficiaries/communities, INPEX expects the applicant to engage meaningfully with those beneficiaries in the development of the initiative, to ensure the intended objectives and outcomes meet the needs of the community/beneficiaries and the initiative is welcomed by those communities. Activities should include initiative co-design and ongoing consultation with the intended communities / beneficiaries.

### ***Funding exclusions***

INPEX refrains from providing funding for the following activities:

- political donations
- religious activities
- promoting gambling and/or alcohol
- individuals participating in activities
- funding for medical treatment
- direct and indirect fundraising activities
- travel costs
- retrospective project costs
- any activity that could be deemed inherently dangerous or risky to the health and wellbeing of anyone associated with the initiative.

### ***Funding amount and partnership term***

Applicants may apply for up to A\$ 5,000.00 for their initiative (excluding GST).

INPEX accepts applications throughout the year, which are assessed on an ad hoc basis. As it may take about two months to assess and process a sponsorship and distribute funds to successful applicants, please consider the timing of your initiative when you make a request for support.

### ***Application***

If you have reviewed these guidelines and confirmed your proposed initiative meets our general criteria and expectations, please contact our Sponsorship Coordinator: [sponsorship@inpex.com.au](mailto:sponsorship@inpex.com.au).

We will thereafter invite you to complete an INPEX Community Sponsorship Application Form.

The form will be used to capture essential information about your organisation and the proposed initiative for further discussion with INPEX.

