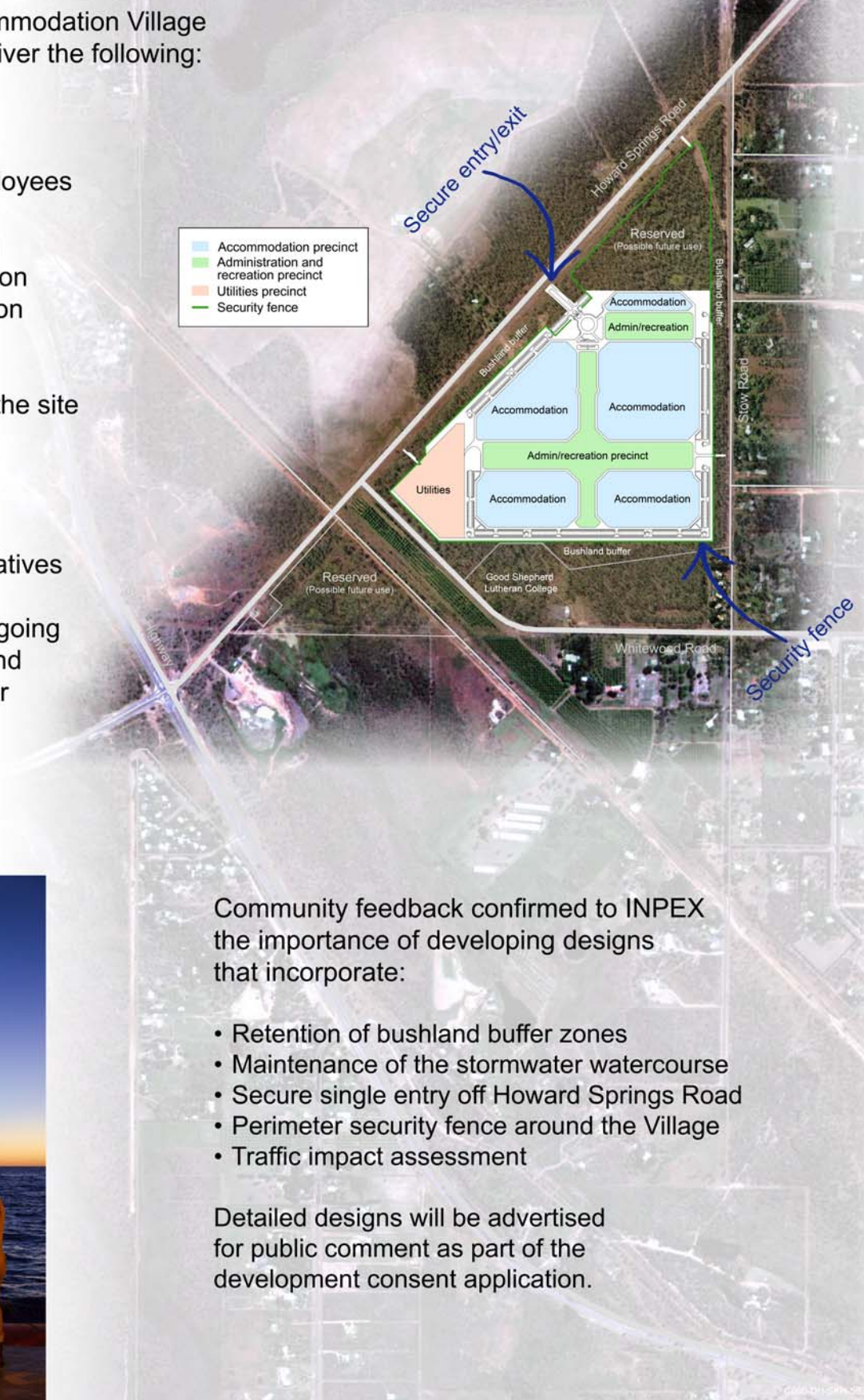
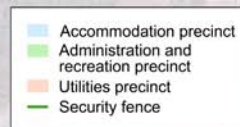


# Accommodation Village Design Principles

Development of the Accommodation Village in Howard Springs will deliver the following:

- Provide a high level of accommodation quality to attract and retain employees
- Balance benefits to local community from integration while limiting drawdown on essential services
- Deliver infrastructure to the site
- Support local business and job opportunities
- Sponsor community initiatives

INPEX is committed to ongoing community consultation and being a respected member of the local community.



Community feedback confirmed to INPEX the importance of developing designs that incorporate:

- Retention of bushland buffer zones
- Maintenance of the stormwater watercourse
- Secure single entry off Howard Springs Road
- Perimeter security fence around the Village
- Traffic impact assessment

Detailed designs will be advertised for public comment as part of the development consent application.

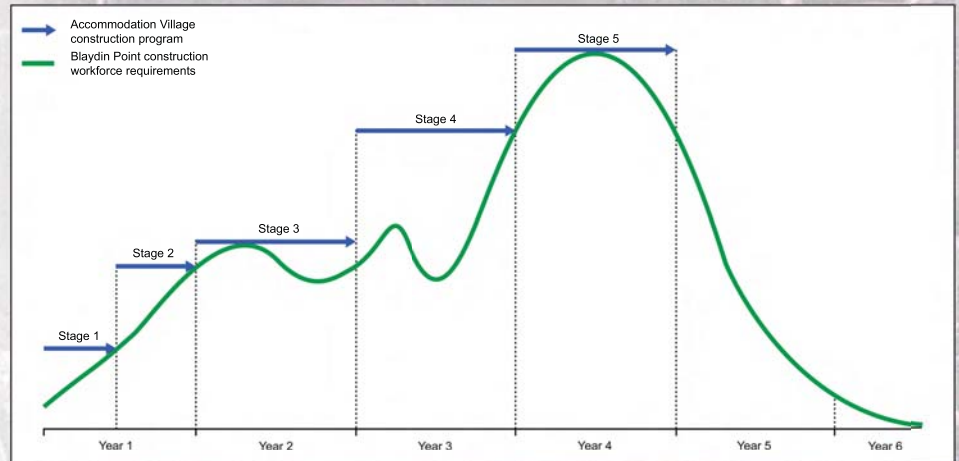
# Staging Construction of the Accommodation Village

While more than 2000 personnel are likely to be accommodated at the Village at the peak of construction, fewer will be required initially.

Construction of the Village will be staged, as will the number of people accommodated at the Village.

Personnel required at the Blaydin Point LNG plant will peak in Year 4 (Stage 5) of construction, declining as the project is commissioned and begins operating.

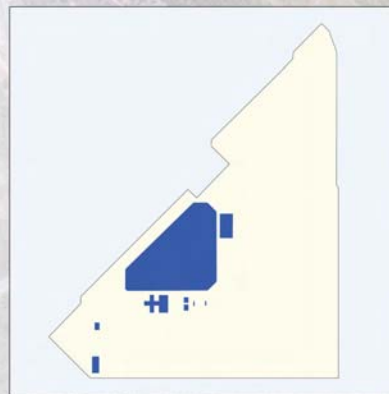
## Personnel



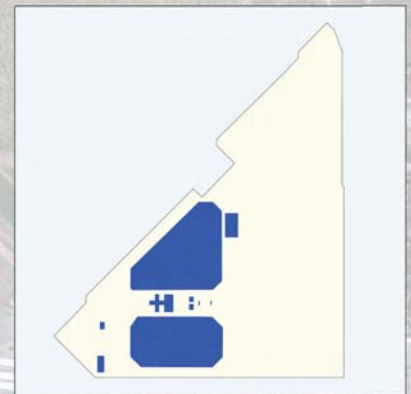
## Staging

### Planned Facilities:

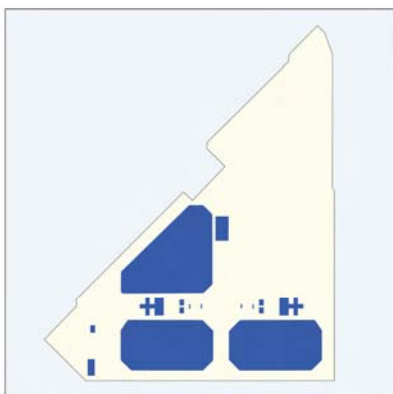
- Swimming pool
- Tennis and basketball courts
- Gymnasium
- Restaurants
- Administration buildings
- Meeting rooms
- First aid room
- Utilities



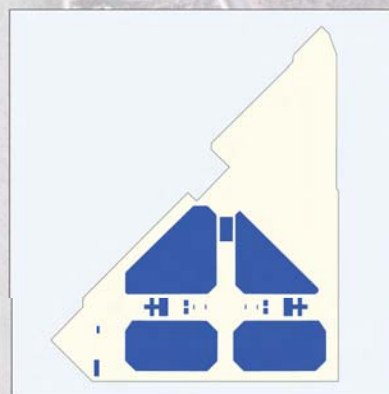
Stage 1 (0-6 months)



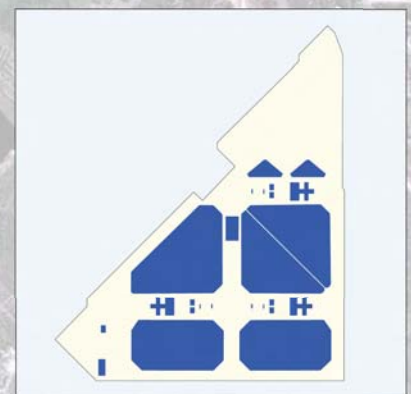
Stage 2 (6-12 months)



Stage 3 (Year 2)



Stage 4 (Year 3)



Stage 5 (Year 4)