

# Ichthys Project Onshore LNG Facilities Update

## Community Bulletin #89 – JKC Australia LNG Pty Ltd



*Top End Development Services employed 130 people while installing verandahs at Manigurr-ma Village construction site.*

### Top End Development Services providing the full deck

The final verandahs are being installed on the accommodation units and laundries at Manigurr-ma Village by Top End Development Services (TEDS).

JKC has given TEDS the opportunity to build the village's covered walkways and add verandahs to each of 877 accommodation modules and 44 laundries and in doing so has supported more than 100 local jobs.

Each verandah is covered with insulated roof panels while underfoot is Ecodeck environmental decking board made from environmentally friendly plantation bamboo and recycled plastic bottles. In total 26,000 square metres of Ecodeck has been laid. This equates to 2.6 hectares (6.4 acres) of decking – enough to cover a good sized rural block.

During the height of construction, TEDS had 130 workers employed.

The company is proud to say that 90 per cent of its workforce was hired locally and there have been no lost time injuries during construction.

With the contract about to wrap up, there are now just 38 employees on site completing the walkways and verandahs, with many of the former TEDS employees transitioning to other work packages.

TEDS village construction site supervisor Ryan McNish said the recent wet weather had posed a challenge but overall working on the Project had been very rewarding.

"It has been tricky balancing the jobs around the weather and juggling deadlines with all the other trades on an ever decreasing work site," he said. "However we are proud of the way our teamwork has developed and the retention of staff for the duration of the contract."

# Ichthys Project Onshore LNG Facilities Update

**This week JKC advises that construction activities at our work sites for the period 22 –28 February will include:**

## Blaydin Point

- Eight trucks daily carrying long, oversized loads of materials required for foundation preparations travelling from East Arm Port to site via Tiger Brennan Drive, Stuart Highway, Jenkins and Channel Island roads\*
- Forty-two road trains daily carrying large piles and material from East Arm Port to site via Berrimah and Wishart roads, Elrundie Avenue and Channel Island Road\*
- Twenty road trains daily transporting crushed rock from Mt Bunday quarry via the Arnhem and Stuart highways, Jenkins and Channel Island roads to site \*
- Three trucks daily transporting material from the Sunday Creek quarry via the Arnhem and Stuart highways, Jenkins and Channel Island roads to site
- Six concrete trucks daily from Winnellie batching plant along Tiger Brennan Drive, Wishart Road, Elrundie Avenue and Channel Island Road to site
- Ten trucks daily from interstate via Stuart Highway, Jenkins and Channel Island roads to site
- Eight trucks daily carrying fill from Howard Springs quarry via Howard Springs Road, Stuart Highway, Jenkins and Channel Island roads to site
- Twelve trucks daily carrying fill from DAC Howard West quarry via Tulagi Road, Stuart Highway, Jenkins and Channel Island roads to site
- Forty-six buses daily carrying workers from Darwin and Palmerston to site

\* Some restrictions are in place on roads in the Northern Territory. Routes and numbers of trucks will be dependent upon restrictions.

## Manigurr-ma Village

- The weekly cyclone alarm testing will occur each Tuesday at 4pm
- Twenty buses daily from Manigurr-ma Village to Blaydin Point
- Ten buses daily carrying existing construction workforce from the permanent Yarrowonga park'n'ride facility to Manigurr-ma Village via the Stuart Highway and Howard Springs Road
- Six concrete trucks daily travelling from Winnellie batching plant along Tiger Brennan Drive, Stuart Highway and Howard Springs Road to site
- Two trucks fortnightly from interstate via Stuart Highway to site
- Work at the intersection of Madsen and Stow roads is continuing
- Normal activities will continue from 7am to 7pm Monday to Friday and Saturday 7am to 3pm

## Park'n'ride Facilities

- A permanent park'n'ride facility is now available at Georgina Crescent, Yarrowonga
- The park'n'ride facility at the Darwin International Airport is also available

Appropriate dust suppression and street sweeping measures are in place at all JKC construction sites. All truck rock loads are covered. Noise, dust and road conditions will continue to be monitored.

## Employment enquiries

To register your interest to work on the Project, go to [www.ichthysjobs.com](http://www.ichthysjobs.com). If you have difficulties online please seek assistance at our Construction Employment Mobilisation Centre (CEMC), 22 Mitchell Street, Darwin, from 10am to 4pm, Monday to Friday, or call (08) 8980 9999.

## Talk to the team

**Humpty Doo shops**  
Wednesday 26 February 3.30pm-5.30pm  
**Coolalinga shops**  
Saturday 1 March 10:00am-noon

***JKC is committed to ensuring the safety of the community and our workers  
– please help us continue to share our roads safely.***

**Community Feedback – 1300 724 795**

**[www.ichthysproject.com](http://www.ichthysproject.com)**


**Community Feedback 1300 724 795**

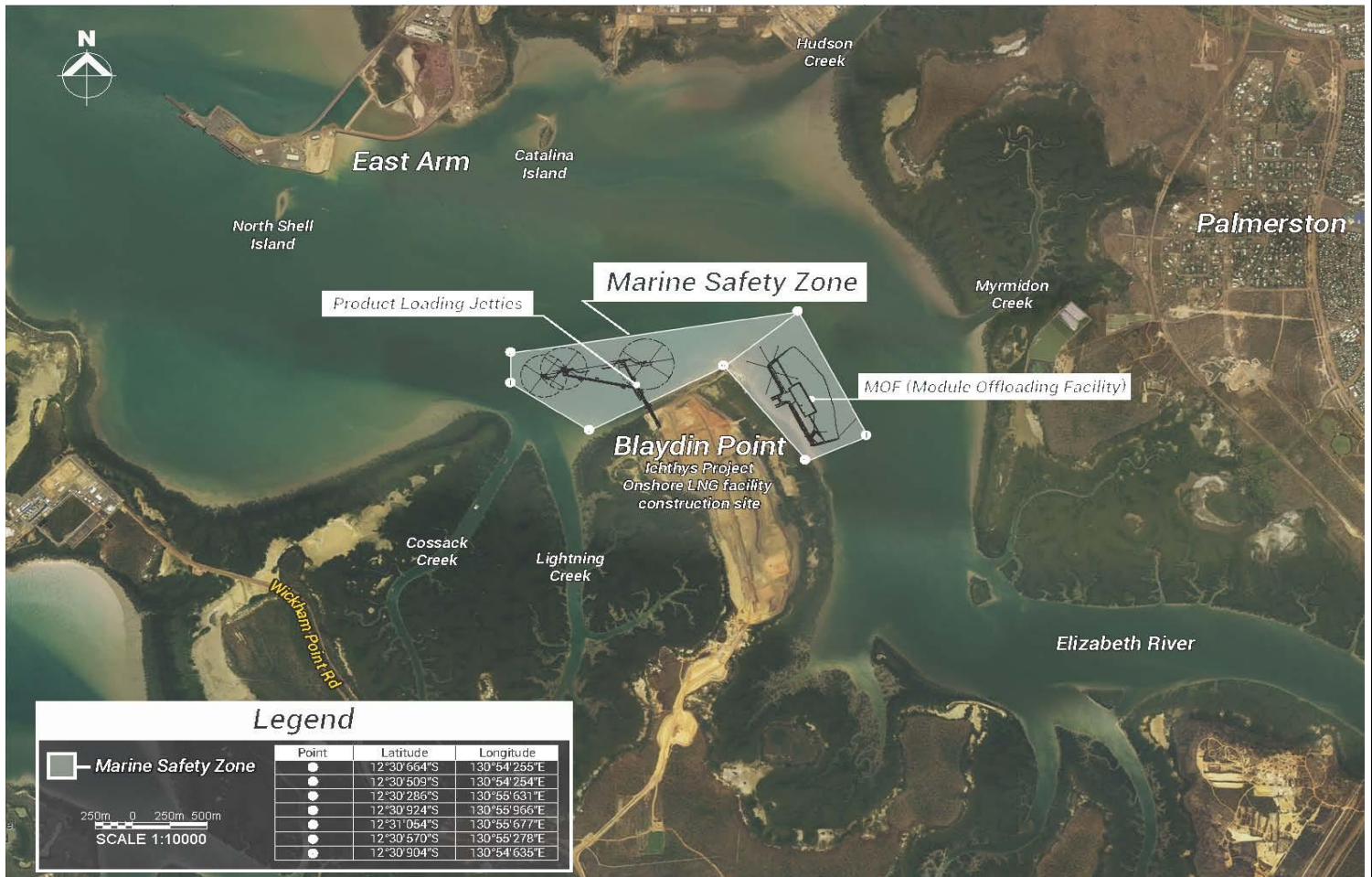


# Ichthys Project Onshore LNG Facilities Update

## Marine activity – advice to snorkelers, divers, boaties and harbour users

### Module offloading facility (MOF) and Jetty

- A number of marine vessels are now in Darwin Harbour working on the MOF and jetty near Blaydin Point
- The cantilever bridge, a large piece of equipment being used to construct the jetty, is now out over the water. Please obey the 250 metre safe distance
- Production piling is ongoing at the MOF and jetty. Accompanying monitoring vessels will be in the area
- A number of barges are working around the MOF and jetty
- Slow down around moored vessels or if you see this flag  indicating there are divers in the area



For up-to-date information on activities in the harbour, please remember to always check the Notice to Mariners at [www.darwinport.nt.gov.au](http://www.darwinport.nt.gov.au), which includes information on hazards and safety zones. Alternatively, you can call the Community Feedback number 1300 724 795 for more information.

Please help us continue to share our waterways safely.