

# Ichthys Project Onshore LNG Facilities Update

## Community Bulletin #84– JKC Australia LNG Pty Ltd Welcome to 2014 – another busy year

Happy New Year! We hope you enjoyed a break and had a safe and happy Christmas.

Welcome to 2014, the third year of construction for the Ichthys Project Onshore LNG Facilities and the year in which we will see construction ramp up at Blaydin Point and our workforce begin to reach its peak.

We intend to continue to work safely to ensure that each and every day you or your family and friends that work with us go home safely.

This year will see the handover of the remaining phases of Manigurr-ma Village – allowing us to house 3,500 fly-in fly-out (FIFO) temporary construction workers. You may notice more buses on our roads as we increase our workforce numbers and move them between our sites.

At Blaydin Point, construction of the onshore gas processing facilities will forge ahead. Work on the jetty will continue while the module offloading facility will be completed allowing for the arrival and offloading from vessels the very large modules which will be assembled to create the LNG liquefaction plant. You may notice an increase in the amount

and the type of marine traffic on Darwin Harbour as these large modules arrive.

You may also notice that our truck movements change as the amount of quarry material we need decreases and other types of equipment and supplies increases, in particular from East Arm Wharf.

Please help us continue to share our roads and waterways safely.

Being guided by a set of values including respect, honesty, integrity and empowerment, we will continue our work to construct this important piece of infrastructure.

No doubt 2014 will present challenges but we have faith in the team that we have gathered, and with hard work and an uncompromising focus on safety we are confident we will continue to overcome any challenges that come our way. We encourage you to contact us at any time if you wish to discuss the Project or provide any feedback.

**John Bramley, Denis Scott, Fujiwara Masakazu**

Ichthys Project JKC directors

STANDING as  
ONE TEAM for **SAFETY**

Ichthys Project  
Onshore LNG Facilities



Incident and Injury Free Leadership Committee

COMMITTED TO AN INCIDENT AND INJURY FREE WORKPLACE

Incident and Injury Free / IIF registered trademarks are used with permission of JMJ Associates

### Employment enquiries:

Go to [www.ichthysjobs.com](http://www.ichthysjobs.com) to register your interest. If you have difficulties online please seek assistance at our Construction Employment Mobilisation Centre (CEMC), 22 Mitchell Street, Darwin, from 10am to 4pm, Monday to Friday, or call (08) 8980 9999.

Community Feedback 1300 724 795



JKC AUSTRALIA LNG Pty Ltd



# Ichthys Project Onshore LNG Facilities Update

## New park'n'ride facility opening

A permanent park'n'ride facility will soon begin operation at Yarrowonga. The facility at Georgina Crescent has been approved for use by the Northern Territory Government and forms part of the Project's Road Transport Management Plan, available at [www.INPEX.com.au](http://www.INPEX.com.au) (search traffic management plan). The new 500-bay facility has been constructed by local companies and, once operational, will allow locals to drive their cars to the central location for collection by JKC's transport contractor, Buslink VIVO – minimising vehicle traffic. Once this facility is operational, the park'n'ride facility currently being used at Yarrowonga Road will be decommissioned.



## Skin checks and sun protection the key to skin cancer prevention

While Project employees are protected from the sun's rays during work hours by Personal Protective Equipment, sunscreen and regular breaks, the importance of protection from sun damage on an everyday basis was reinforced with a recent site visit by skin specialists. Unfortunately, skin cancer is prevalent in Australia, accounting for around 80 per cent of newly diagnosed cancers. The

incidence of skin cancer in Australia is one of the highest in the world, two to three times the rates in Canada, the US and the UK (source: Cancer Council Australia).

A doctor and technicians from Skin Patrol, a South Australian based service, recently visited Blaydin Point under an arrangement with Leighton Contractors to offer skin checks to personnel.

Leighton Contractors' Rick Gonsalves said the company's value of 'safety and health above all else' encompasses a holistic approach to the safety, health and wellbeing of our employees on and off site.

"Skin checks are an excellent example of a practical health prevention initiative aimed at building awareness of skin cancer amongst our employees while also having a beneficial health education flow on effect to our employees' families and friends," Rick said.

Many, including Gaynor McTaggart (left) took the opportunity to have their skin checked. If required, Skin Patrol then facilitates follow up treatment. The service also specialises in educating people about protection from sun damage, focusing on awareness. Outside of these visits, Skin Patrol encourages people to regularly self-check their skin to know the appearance of spots and notice if they change.

Tips for self-checks include:

- Get into a regular routine – do a thorough skin check every three months
- Look at every spot on your body. Use pictures of skin spots as a guide, make an appointment with your GP if you are concerned.



# Ichthys Project Onshore LNG Facilities Update

***This week JKC advises that construction activities at our work sites for the period 18 – 24 January will include:***

## **Blaydin Point**

- Eight trucks daily carrying long, oversized loads of materials required for foundation preparations travelling from East Arm Port to site via Tiger Brennan Drive, Stuart Highway, Jenkins and Channel Island roads
- Thirty-four road trains daily carrying large piles and material from East Arm Port to site via Berrimah and Wishart roads, Elrundie Avenue and Channel Island Road
- Twenty road trains daily transporting crushed rock from Mt Bundey quarry via the Arnhem and Stuart highways, Jenkins and Channel Island roads to site
- Three trucks daily transporting material from the Sunday Creek quarry via the Arnhem and Stuart highways, Jenkins and Channel Island roads to site
- Six concrete trucks daily from Winnellie batching plant along Tiger Brennan Drive, Wishart Road, Elrundie Avenue and Channel Island Road to site
- Ten trucks daily from interstate via Stuart Highway, Jenkins and Channel Island roads to site
- Eight trucks daily carrying fill from Howard Springs quarry via Howard Springs Road, Stuart Highway, Jenkins and Channel Island roads to site
- Twelve trucks daily carrying fill from DAC quarry via Tulagi Road, Stuart Highway, Jenkins and Channel Island roads to site
- Forty-six buses daily carrying workers from Darwin and Palmerston to site

Appropriate dust suppression and street sweeping measures are in place at all JKC construction sites. All truck rock loads are covered.

Noise, dust and road conditions will continue to be monitored.

## **Manigurr-ma Village**

- The weekly cyclone alarm testing will occur each Tuesday at 4pm
- Work at the intersection of Madsen and Stow roads is continuing
- Normal activities will continue from 7am to 7pm Monday to Friday and Saturday 7am to 3pm
- Twenty buses daily from Manigurr-ma Village to Blaydin Point
- Ten buses daily carrying existing construction workforce from the temporary Yarrowonga park'n'ride facility to Manigurr-ma Village via the Stuart Highway and Howard Springs Road
- Six concrete trucks daily travelling from Winnellie batching plant along Tiger Brennan Drive, Stuart Highway and Howard Springs Road to site
- Two trucks fortnightly from interstate via Stuart Highway to site

## **Park'n'ride Facilities**

- A permanent park'n'ride facility will soon begin operation at Georgina Crescent, Yarrowonga
- Once the Georgina Crescent facility is operational, the temporary park'n'ride facility at Yarrowonga will be decommissioned
- The park'n'ride at Darwin International Airport is now operational

***JKC is committed to ensuring the safety of the community and our workers  
– please help us continue to share our roads safely.***

***Community Feedback – 1300 724 795***


***[www.ichthysproject.com](http://www.ichthysproject.com)***

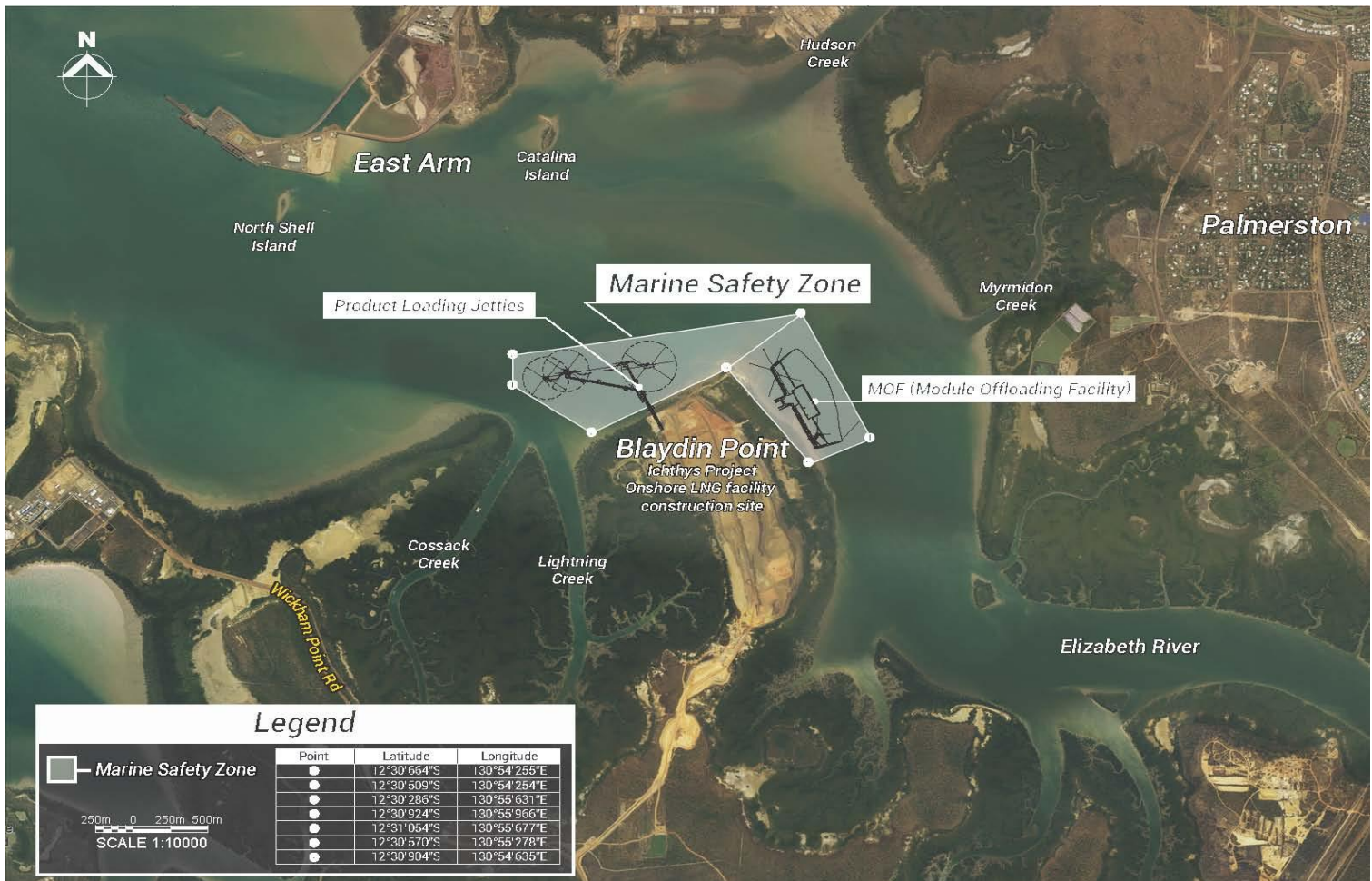


# Ichthys Project Onshore LNG Facilities Update

## Marine activity – advice to snorkelers, divers, boaters and harbour users

### Module offloading facility (MOF) and Jetty

- A number of marine vessels are now in Darwin Harbour working on the MOF and jetty near Blaydin Point
- The cantilever bridge, a large piece of equipment being used to construct the jetty, is now out over the water. Please obey the 250 metre safe distance
- Production piling is ongoing at the MOF. Accompanying monitoring vessels will be in the area
- A number of barges are working around the MOF
- Slow down around moored vessels or if you see this flag  indicating there are divers in the area
- Please be aware of a new pipe in the harbour, located south of the MOF
- Marker buoys identify the length of the pipe



For up-to-date information on activities in the harbour, please remember to always check the Notice to Mariners at [www.darwinport.nt.gov.au](http://www.darwinport.nt.gov.au), which includes information on hazards and safety zones. Alternatively, you can call the Community Feedback number 1300 724 795 for more information.